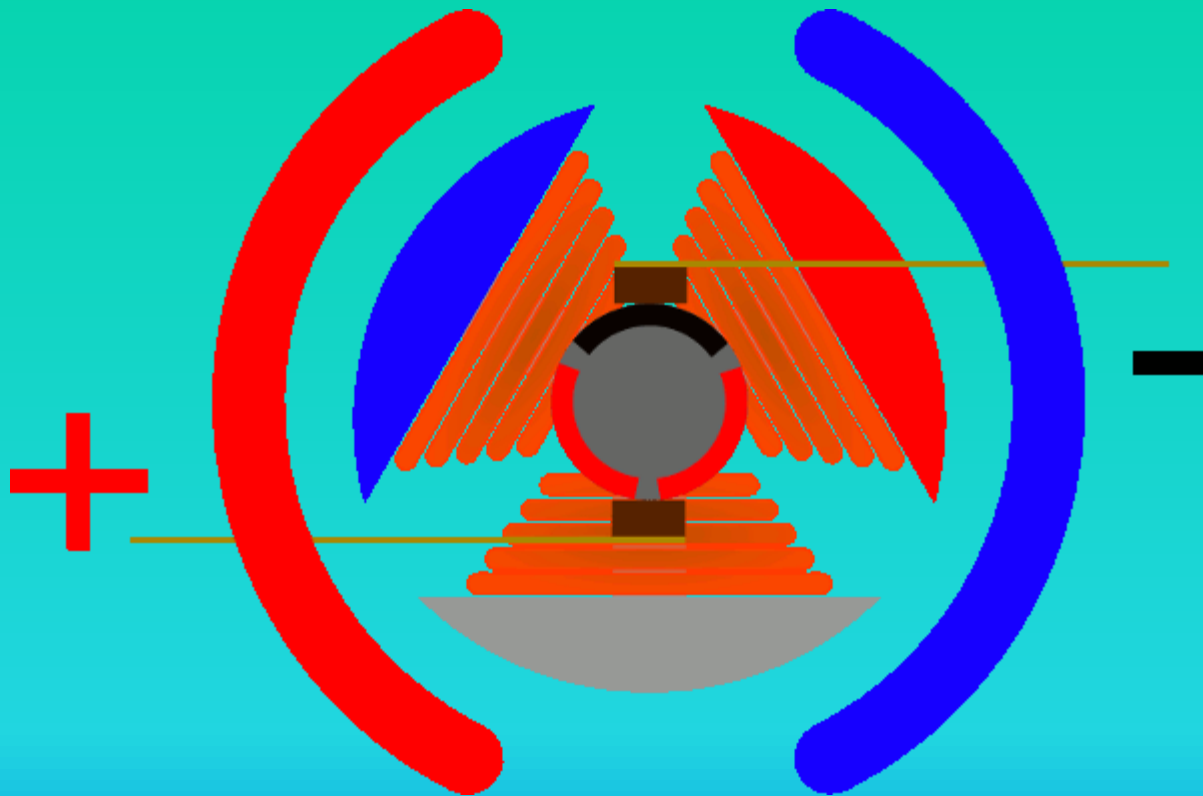
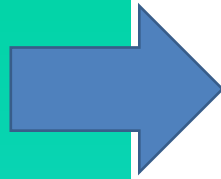
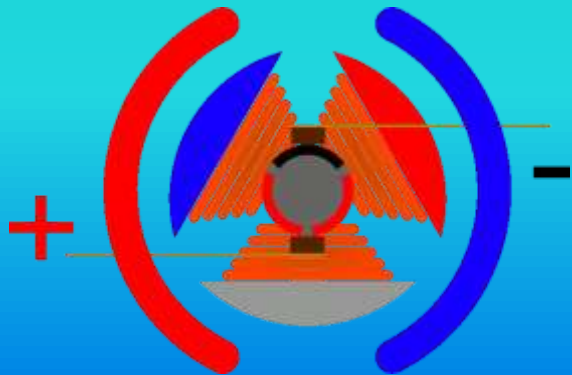


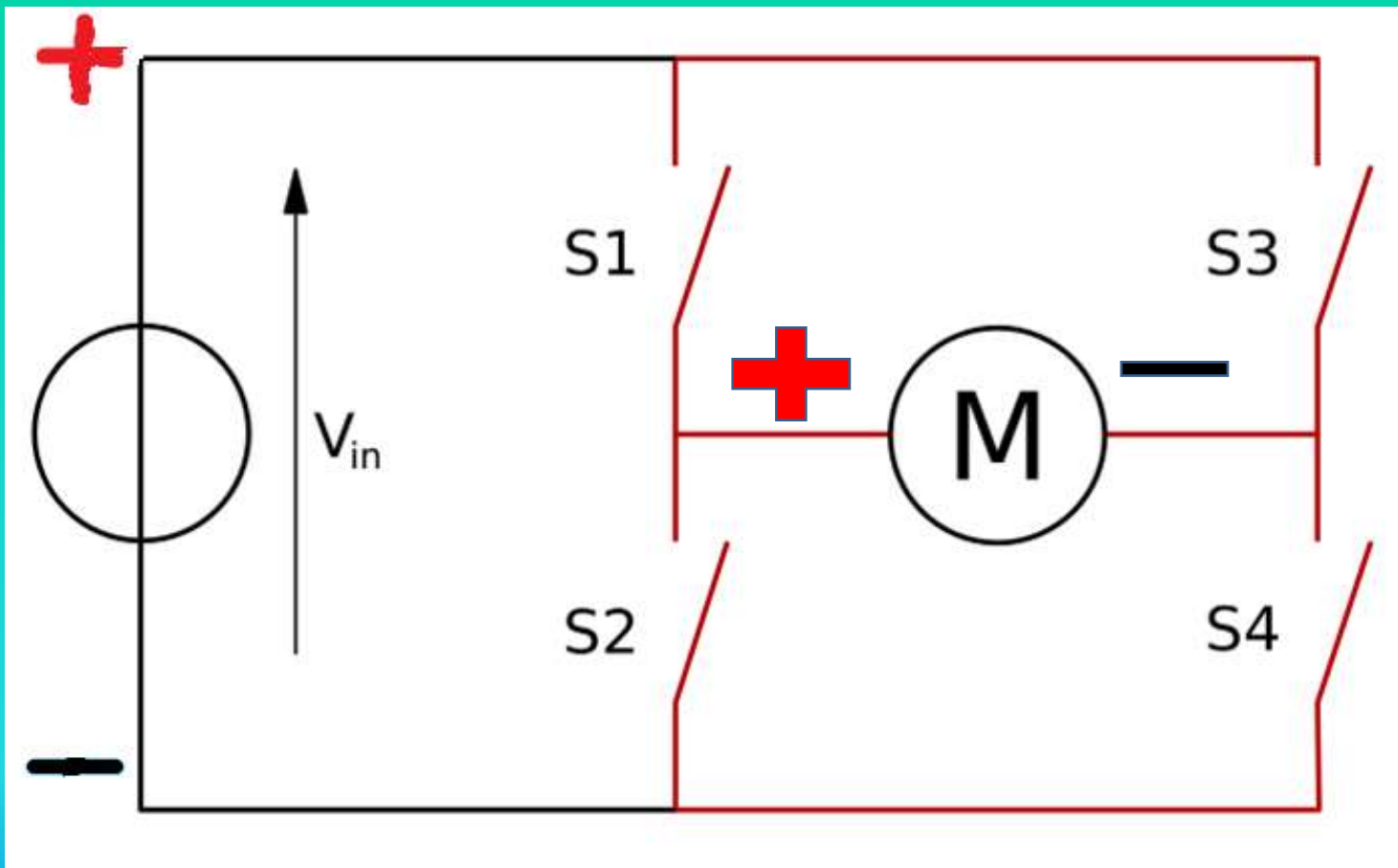
Εισαγωγή στα DC Motors



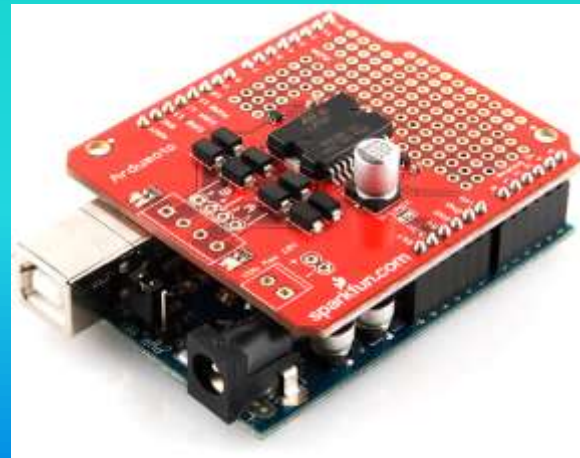
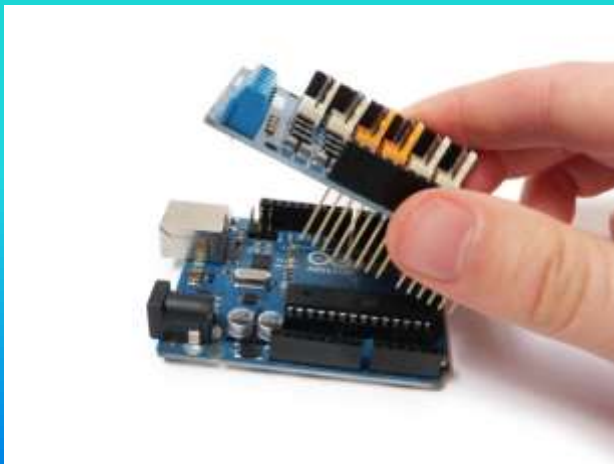
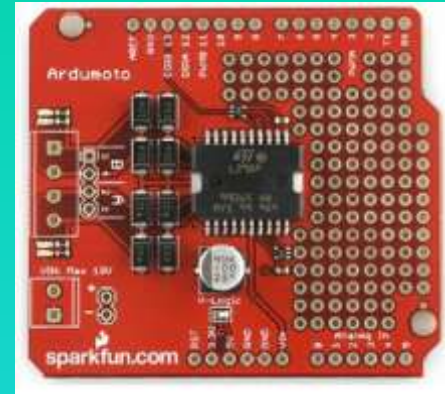
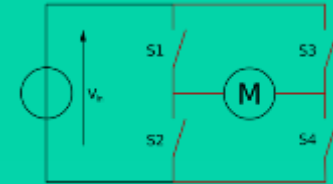
Dc motors







Arduino Motor Shield

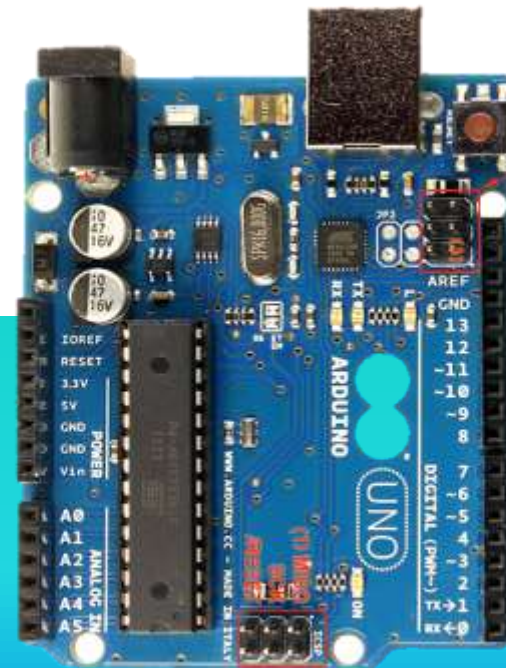


Input and Output

This shield has two separate channels, called A and B, that each use 4 of the Arduino pins to drive or sense the motor. In total there are 8 pins in use on this shield. You can use each channel separately to drive two DC motors or combine them to drive one bipolar stepper motor.

The shield's pins, divided by channel are shown in the table below:

Function	pins per Ch. A
<i>Direction</i>	D12
<i>PWM</i>	D3

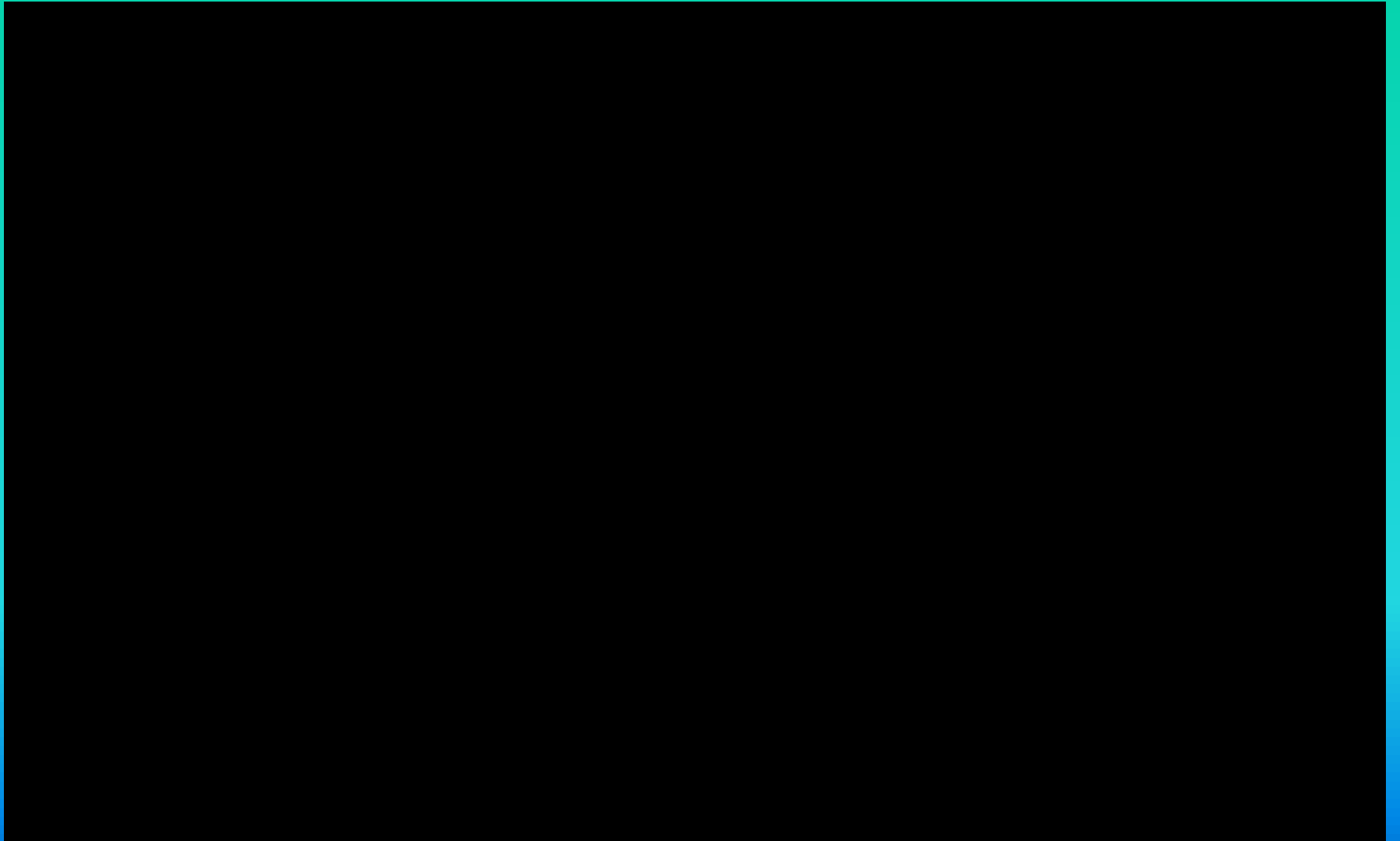


```
void setup() {
  pinMode(12, OUTPUT); //Initiates Motor Channel A pin
}

void loop(){
  //forward A
  digitalWrite(12, HIGH); //Establishes forward direction of Channel A
  analogWrite(3, 255); //Spins the motor
  delay(3000);
  analogWrite(3, 0); //Stops the motor
  delay(3000);

  //backward A
  digitalWrite(12, LOW); //Establishes backward direction
  analogWrite(3, 200); //Spins the motor on Channel A
  delay(3000);
  analogWrite(3, 0); //Stops the motor on Channel A
  delay(1000)
}
```

ΕΦΑΡΜΟΓΗ



ΤΕΛΟΣ ΠΑΡΟΥΣΙΑΣΗΣ

ΕΥΧΑΡΙΣΤΟΥΜΕ ΠΟΛΥ
ΧΡΗΣΤΟΣ ΑΝΤΩΝΙΟΥ
ΑΓΓΕΛΟΣ ΔΕΛΗΣ

