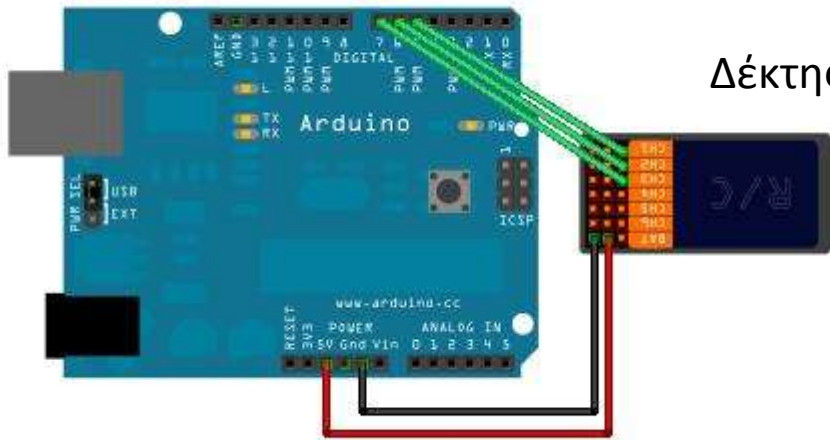


Μικροελεγκτής Arduino



Δέκτης



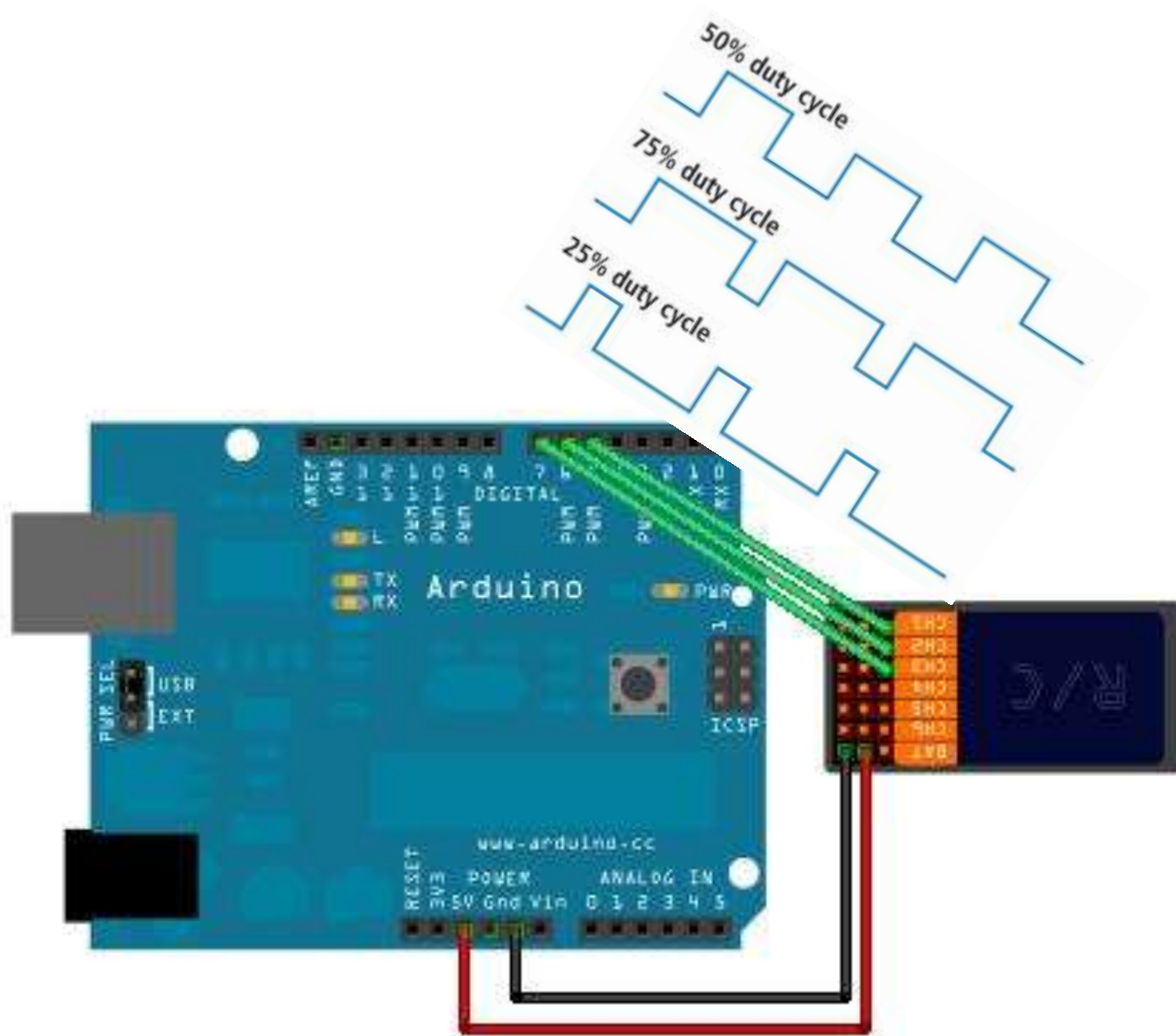
Πομποί





THROTTLE  
RUDER

ELEVATOR  
AILERONS



## Διαμόρφωση εύρους παλμού (Pulse Width Modulation)

**50% duty cycle**



**75% duty cycle**



**25% duty cycle**



```
#define THRO_PIN 7
#define AILE_PIN 6
#define ELEV_PIN 5
#define RUDD_PIN 4

unsigned long Duration_THRO, Duration_AILE, Duration_ELEV, Duration_RUDD;

void setup() {
  Serial.begin(9600);
  pinMode(THRO_PIN, INPUT);
  pinMode(AILE_PIN, INPUT);
  pinMode(ELEV_PIN, INPUT);
  pinMode(RUDD_PIN, INPUT);
}

void loop(){
  Duration_THRO = pulseIn(THRO_PIN, HIGH);
  Duration_AILE = pulseIn(AILE_PIN, HIGH);
  Duration_ELEV = pulseIn(ELEV_PIN, HIGH);
  Duration_RUDD = pulseIn(RUDD_PIN, HIGH);
  Serial.print (Duration_THRO);
  Serial.print (" ");
  Serial.print (Duration_AILE);
  Serial.print (" ");
  Serial.print (Duration_ELEV);
  Serial.print (" ");
  Serial.println (Duration_RUDD);
}
```